

Appendix VII GESTURES

The gestures in this appendix apply to AKA as well as SHIRO, even though only one is shown.

GESTURES BY REFEREES DURING KUMITE MATCHES

Following the gestures for the Referee during a KUMITE match:



Inviting the competitors to enter the court
Straight arms from the outside in



SHOBU HAJIME
ENCHO SEN HAJIME
SAI SHIAI HAJIME
Feet together, hands open



YAME
Sweeping downward motion



YAME
Showing the opinion AKA WAZARI



YAME
Showing the opinion AKA IPPON



AKA WAZARI

Arm from the opposite shoulder down in an 45° angle



AKA IPPON / AKA NO KACHI

Arm from the opposite hip up in an 135° angle



TSUZUKETE HAJIME

Straight arms from the outside in, left or right leg back



AKA JOWAI

AKA's technique was not enough



AKA MAAI

AKA's technique was too far away / incorrect distance



AI UCHI

Fists join together in front



AKA UKETERU
Here AKA blocked SHIRO's technique



AKA CHUDAN NUKETERU
AKA's technique passed



AKA JODAN NUKETERU
AKA's technique passed



AKA HAI AI
AKA's technique was faster / landed first



TORIMASEN
Both arms 45°, palms facing down



FUKUSHIN SHUGO (for all Judges)
Sweeping motion from the outside in





FUKUSHIN SHUGO (calling one Judge)
Sweeping motion from the front in



Preparatory movement for penalties



AKA KEIKOKU
Point at the feet of the offender with the index finger



AKA HANSOKU CHUI
Point at the chest of offender with the index finger



AKA HANSOKU
Point at the face of offender with the index finger



AKA SHIKKAKU
Point at the face of offender with the index finger then out





AKA JOGAI
Point at the boundary of the competition area



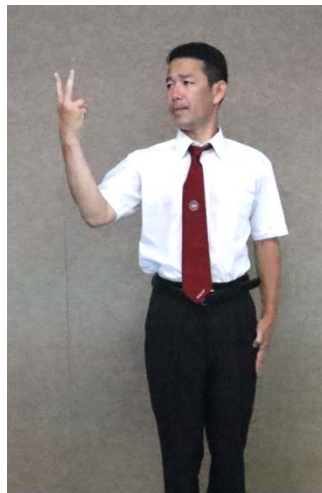
AKA MUBOBI
Touch your cheek



AKA TOHI
AKA is escaping



IKKAI
Use index finger to indicate first time



NIKKAI
Use index and middle fingers to indicate second time



SANKAI
Use index, middle and ring fingers to indicate third time



HANTEI (only in case of HIKIWAKE at the end of SAI SHIAI in individual matches)
Two blows with the whistle



AKA NO KACHI
Arm from the opposite hip up in an 135° angle





HIKIWAKE (only in team kumite matches)
Arms 45°, palms facing up

GESTURES BY JUDGES DURING KUMITE MATCHES

Following the gestures for the Judges during a KUMITE match:



Correct sitting position



AKA WAZARI
Arm straight out from shoulder



AKA IPPON
Arm straight up



AKA JOWAI
Wave flag lightly up and down



MIENAI
Flags together below the eyes



MAAI
Hold flags parallel apart



AI UCHI
Bring points of the flags together



SHIRO UKETERU
SHIRO blocked AKA's technique



AKA CHUDAN NUKETERU
AKA's technique passed



AKA JODAN NUKETERU
AKA's technique passed



TORIMASEN
Wave flags sideways once



AKA KEIKKOKU
Small circle in front



AKA HANSOKU CHUI
Small circle straight up





AKA HANSOKU
Large circle straight up



AKA JOGAI
Point flag at the line



AKA MUBOBI
Touch cheek with flag lightly



AKA TOHI
Circle flag pointing downwards



Draw the attention of the Referee, e.g. when a contestant of one's own country comes up

REFEREES AND JUDGES DURING KATA MATCHES

Following the gestures for the Referee and Judges during a KATA match:



Announcement of kata in Kohaku matches by the Referee



AKA NO KACHI in KOHAKU matches by the Referee
Stand up, take one step forward and lift the red flag straight up



SHIRO NO KACHI in KOHAKU matches by the Referee
Stand up, take one step forward and lift the white flag straight up



FUKUSHIN SHOGO
Referee calls all the Judges





FUKUSHIN SHOGO
Referee calls one specific Judge



Correct waiting position with the flags rolled up for the Referee and Judges



HANTEI for Referee and Judges
Unroll your flags



HANTEI for Referee and Judges
Upon the second whistle tone show your opinion, in this case AKA NO KACHI



Correct waiting position for Referee and Judges with the point card



Raise points and show to the technical table for Referee and Judges



Turn points and show to the audience before lowering your points for Referee and Judges



Signaling a technical error by AKA
Lightly whistle and shake your red flag
This gesture can be used by the Judges to draw
the attention of the Referee to request
FUKUSHIN SHUGO